

<b>WinFrog Device Group:</b>	<b>Sounder</b>
<b>Device Name/Model:</b>	<b>MbToolsLink</b>
<b>Device Manufacturer:</b>	Fugro Pelagos
<b>Device Data String(s) Output to WinFrog:</b>	
<b>WinFrog Data String(s) Output to Device:</b>	<pre> Binary Udp Packet  uint Synch;          // 4 0xf0f0f0f0 int Type;            // 4 1 Start 2 End BYTE LineName[80];  // 80 Bytes double Time;        // 8 double Speed;       // 8 int RPM;             // 8 double HDOP;        // 8 int Range;          // 4 int Power;          // 4 double Pulse;       // 8 int Gain;           // 4 136 static const int Size = 136; static const int START_LINE = 1; static const int END_LINE = 2; static const unsigned int SYNCH = 0xf0f0f0f0; </pre>
<b>WinFrog Data Item(s) and their RAW record:</b>	DATA OUTPUT no raw record is created

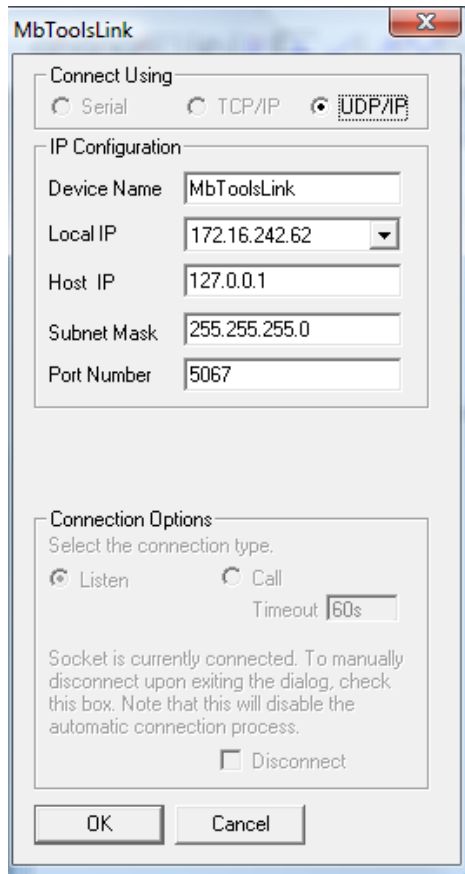
### **DEVICE DESCRIPTION:**

This device sends information to Multibeam Survey Tools Version 3 and above. A UDP packet is sent at the start and end of line when Multibeam logging is enabled. You must add the DATA OUTPUT data item to the appropriate vehicle. No configuration of the data item is required.

## ***DEVICE CONFIGURATION INSTRUCTIONS***

---

### **WINFROG I/O DEVICES > EDIT I/O:**



UDP only, configurable parameters.

**Device Name:** Enter the name for the device as it is to be displayed and logged.

**Host Address:** From the drop down list of available local Ethernet addresses, select the address that is on the respective network.

**IP Address:** Enter MBST's UDP broadcast address.

**Subnet Mask:** Enter the appropriate subnet mask.

**Port Number:** Enter MBST's port number, the default is 5067.